

Types 1322 / 1328

End mill with two flutes and GCT MicroSpeed diamond coating

Applications / Advantages:

- Routing of inner and outer contours as well as for depaneling of IMS made of aluminium and copper
- Ideally suited for depth routing of IMS, aluminium and copper, laminate with ceramic fillers
- Very high dimensional accuracy and process capability
- Feed rate increases by factor 3-4, tool life increases up to 12 times
- no pre-drilling required with **Type 1328**



MicroSpeed diamond coating - Made by GCT in Germany

Ø (mm)	Flute length (mm)	
0.3	-	2.0
0.4	-	2.0
0.5	-	2.0
0.6	-	2.0*
0.8	-	2.0*
1.0	-	3.0*
1.2	-	3.0*
1.3	-	3.0
1.4	-	3.0*
1.5	3.0*	5.0*
1.6	-	5.0*
1.8	-	5.0*
1.9	-	5.0*
2.0	4.0*	6.0*
2.1	-	6.0
2.4	-	6.0*
2.5	-	6.0
3.0	-	6.0*

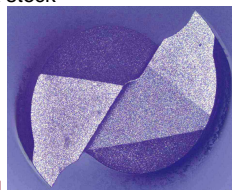
Further diameters and flute lengths on request.

Type 1322:

- right hand cutting, right twisted (up cut)
- flat end cut
- shank Ø 3.175mm
- overall length 38.10mm
- tolerances according to GCT router specification
- made of solid carbide

Type 1328:

- * available ex stock



- centre cutting

Type 1368:

- right hand cutting, left twisted (down cut)
- further data as per type 1328
- not available in all Ø